

The Hampshire



The Hampshire

4 Bed - 3.5 Bath

3081 sqft

Exterior:

High Quality Exterior
 Low Maintenance Hardie Lap & Masonry Brick
 30-Year Dimensional Architectural Roof Shingles & Metal Roof
 Exposed Rafter Tails on Front & Back Porch
 Single Hung, Double Pane High Efficiency Low E Glass Vinyl Windows
 Sodded Lot using Bermuda Grass
 -Includes 10 pallets of sod & planting beds in front of home
 2 Car Garage
 6x6 Pressure Treated Columns
 1x6 Shutters with 1x4 Raised Accents

Building Standards:

Slab on Grade Concrete Foundation
 Traditional Stick Framing Methods
 Framed "Green Corners" for higher Energy Efficiency

Interior Features:

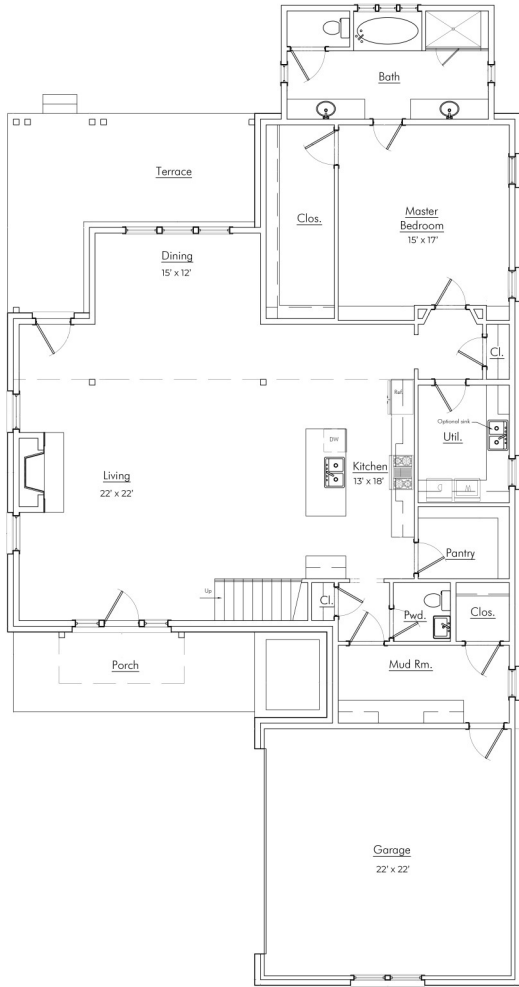
9' Ceilings throughout Main Floor & 8' Ceilings throughout Second Floor
 Traditional R13 Batt/Fiberglass Insulation
 Open Cell R20 Spray Foam Installed on Roof Deck
 High Efficiency 50 Gallon Gas Water Heater Energy Efficient 14 SEER Electric Heat Pump

Interior Finishes:

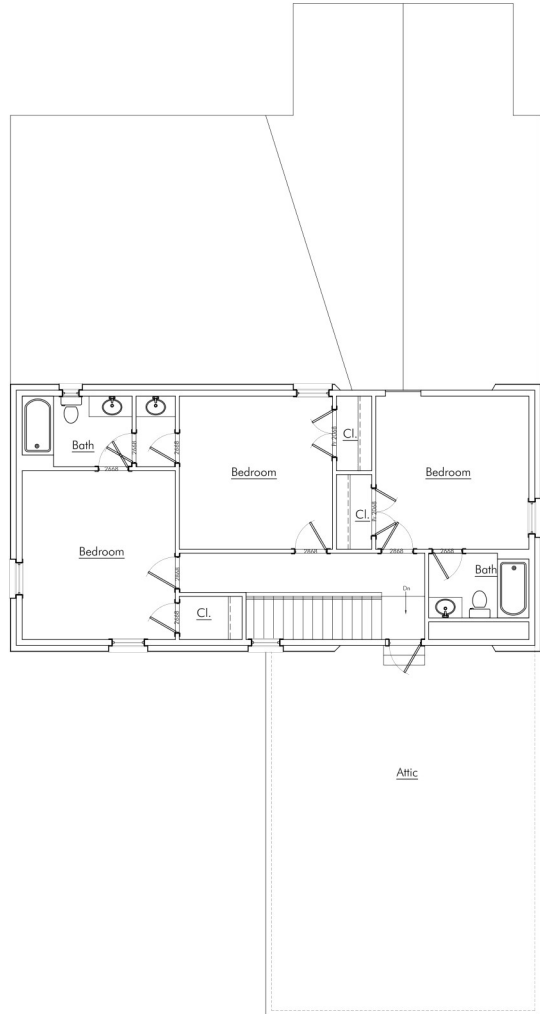
5" Hand Scraped Pre-Engineered Hardwood Flooring in the Common Areas on Main Floor
 Carpet in all Bedrooms
 Ceramic tile in all Full Bathrooms
 Custom Designed Wooden Cabinets in Kitchen & Bathrooms
 Granite counter tops throughout
 Stainless Steel Appliances by Whirlpool®, including the Dishwasher, Gas Range & Microwave
 Delta® Kitchen and Bath Fixtures
 Double Vanity in Master Bathroom with Under-mount sinks
 Vanity Mirrors
 Schluter Shower system with Delta fixtures & full tile surround with a semi-frameless glass shower door in Master Bathroom
 Soaking Garden Tub in Master Bathroom
 Low Maintenance High Quality Fiberglass Tub/ Shower in all other Full Bathrooms
 Recessed Lighting throughout Kitchen, Living Room, & Master Bedroom
 Wire Shelving installed in all Closets, Pantry, & Laundry Areas
 Interior walls primed & painted with Sherwin Williams® products. Includes two wall colors, one trim color, & one ceiling color
 6" Baseboards throughout
 Ventless Gas Fireplace
 Judges Paneling will be installed in Dining Room & Foyer
 Two options for 5' tall brick surround Fireplace, including a 6x12 mantle with corbels or a Shaker Style mantle.

Upgraded Finish Options:

Farmhouse Sink	\$1,250
Under Cabinet Lighting	\$1,200
2" White Faux Wood Blinds throughout	\$69 per window/door
Window Screens (on all operable windows)	\$32 per window
Solid Core Doors throughout	\$1,700
Barn Door	\$500
Floor Outlet	\$500 per
USB Outlet	\$50 per
Surround Sound	\$3,250
(Includes 5 ceiling speakers, 1 sub woofer (floor standing), 5 channel audio-video receiver/amplifier & 1 Control4 entertainment controller with remote)	
Music Package	\$1,000 per room
(Includes 2 in ceiling speakers & 1 zone amp w/ wireless remote control via smart phone or tablet app, requires WiFi)	



Main Level



Upper Level



"Building Reputations"

www.HollandHomesllc.com

(334) 332-7157

THE ELEVATION AND FLOOR PLANS CONTAINED HEREIN ARE NOT TO SCALE AND ARE GRAPHIC ILLUSTRATIONS FOR MARKETING AND PRESENTATION PURPOSES ONLY. ACTUAL FLOOR PLANS AND ALL MATERIALS MAY VARY PRIOR TO OR DURING CONSTRUCTION. SOME FEATURES SHOWN MAY BE OPTIONAL. HOLLAND HOMES RESERVES THE RIGHT TO SUBSTITUTE MATERIALS AND COMPONENTS OF SIMILAR QUALITY, AND TO CHANGE FEATURES, OPTIONS, AND ARCHITECTURAL DETAILS WITHOUT PRIOR NOTICE. ACCORDINGLY, NEITHER THESE MATERIALS, NOR ANY COMMUNICATION MADE OR GIVEN IN CONNECTION WITH THESE MATERIALS, MAY BE DEEMED TO CONSTITUTE ANY REPRESENTATION OF WARRANTY, CONTRACT OR GUARANTEE OR MAY OTHERWISE BE RELIED UPON BY ANY PERSON OR ENTITY UNLESS CONVEYED IN WRITTEN FORM. THIS MARKETING INFORMATION AND PLAN ARE PROPERTY OF HOLLAND HOMES.